

# AL-FEROZ RESIDENCIA

11-12 MIDWAY COMMERCIAL  
BAHRIA TOWN LAHORE



A PROJECT OF

**AF**  
*Developers*

## LAUNCHING PRICES

First Floor to 6th Floor Apartments

**2.5 YEARS  
PAYMENT PLAN**

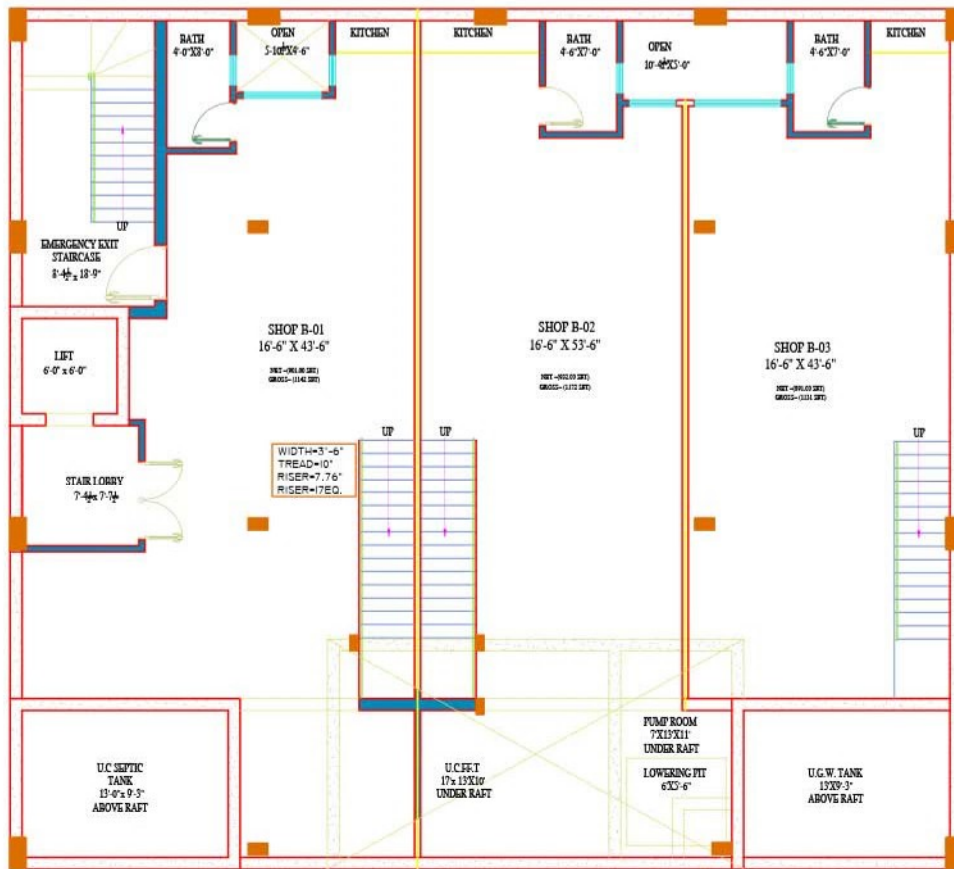
APARTMENTS GROSS AREA SQ.FT	PER SQ.FT	GRAND TOTAL	BOOKING 25%	6 MONTHLY 5 BALOON PAYMENT	POSSESSION 10%	30 MONTHLY INSTALLMENT
1 BED (541)	16,000	8,656,000	2,164,000	432,800	865,600	115,413
1 BED (540)	16,000	8,640,000	2,160,000	432,000	864,000	115,200
1 BED (560)	16,000	8,960,000	2,240,000	448,000	896,000	119,467
1 BED F (620)	17,000	10,540,000	2,635,000	527,000	1,054,000	140,533
1 BED F (554)	17,000	9,418,000	2,354,500	470,900	941,800	125,573
STUDIO F (470)	17,000	7,990,000	1,997,500	399,500	799,000	106,533

 93-B Rafi Commercial , Sector E , Bahria Town Lahore

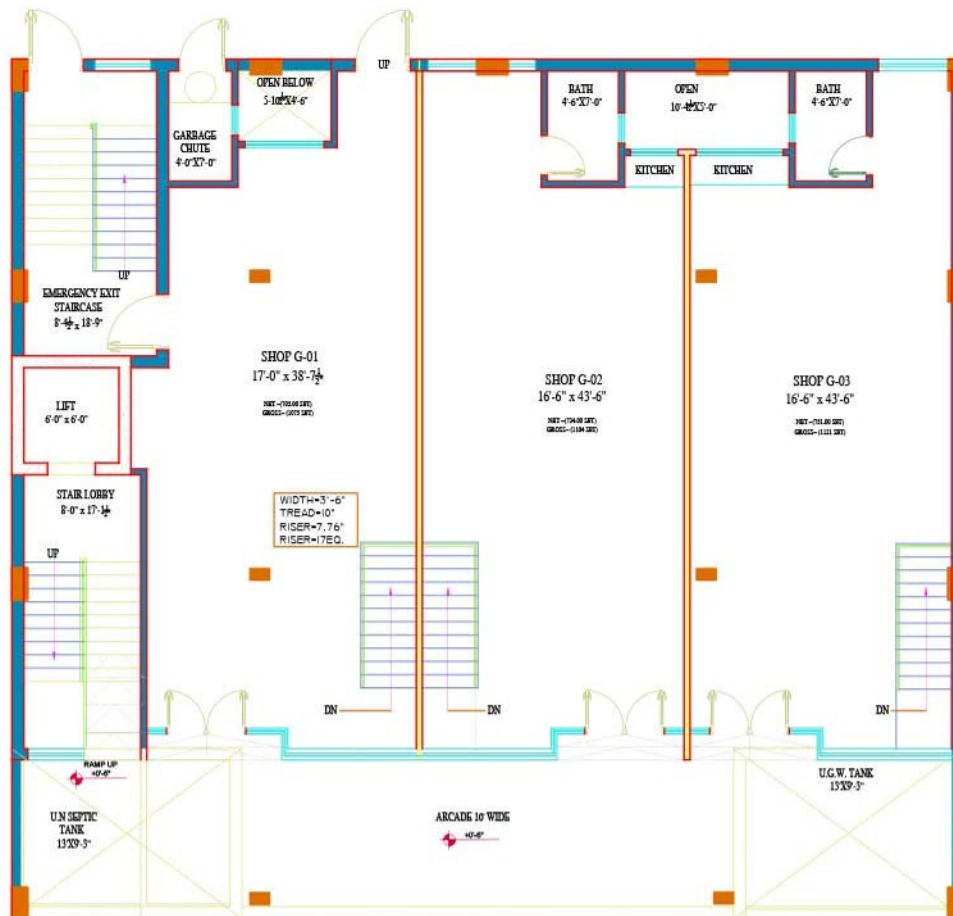




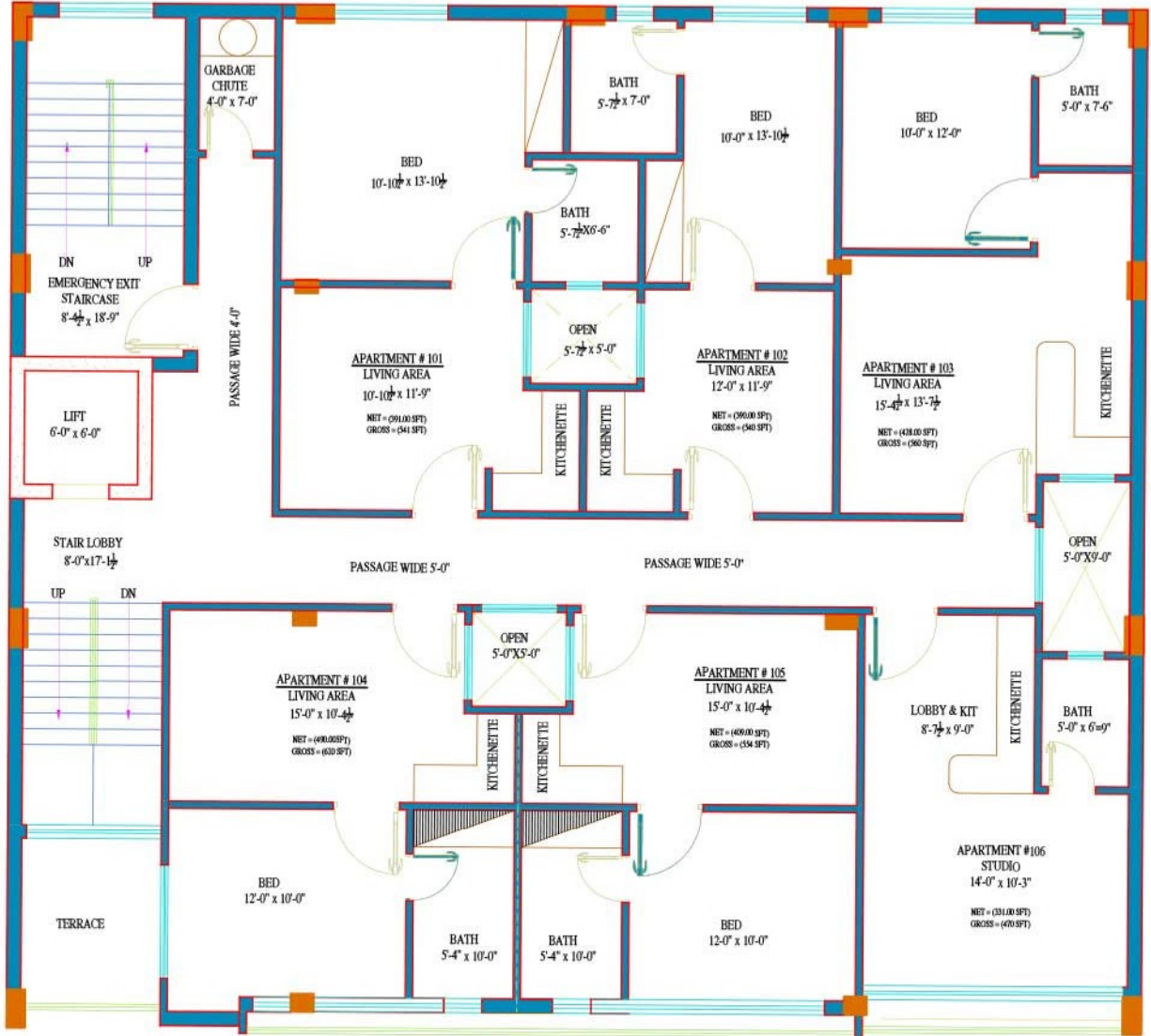




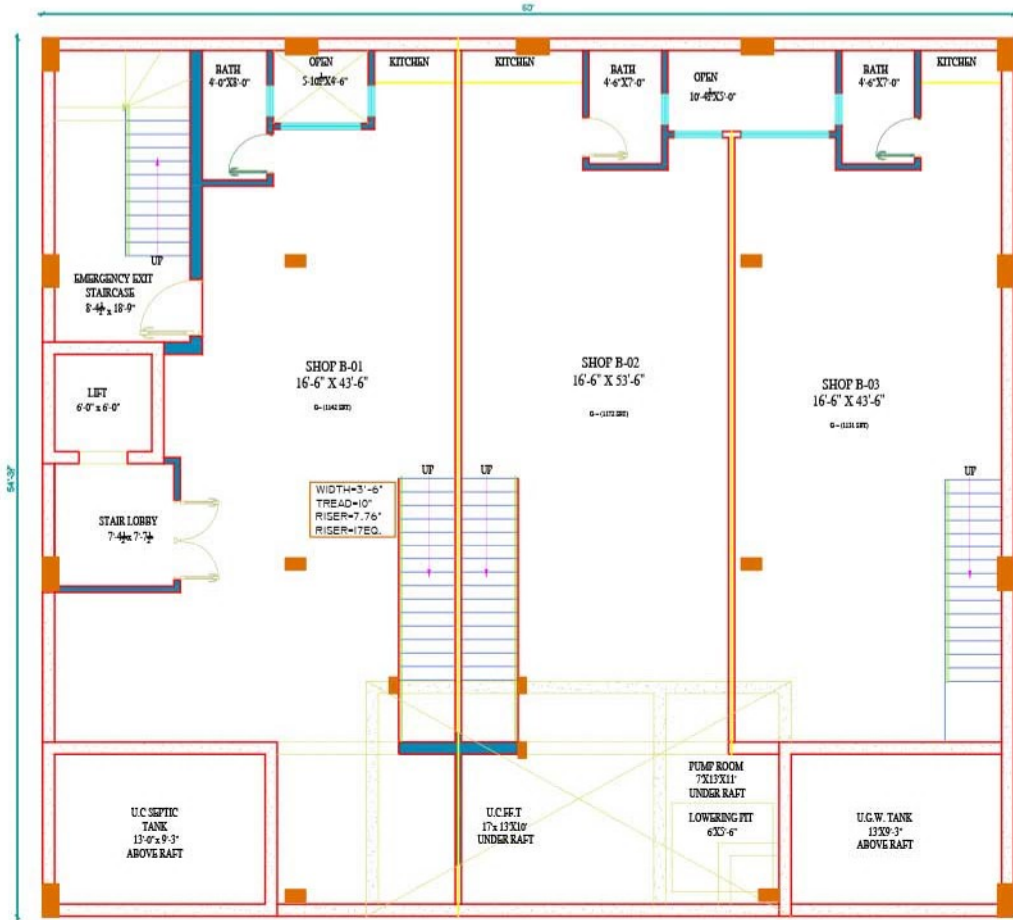
**BASEMENT FLOOR PLAN**



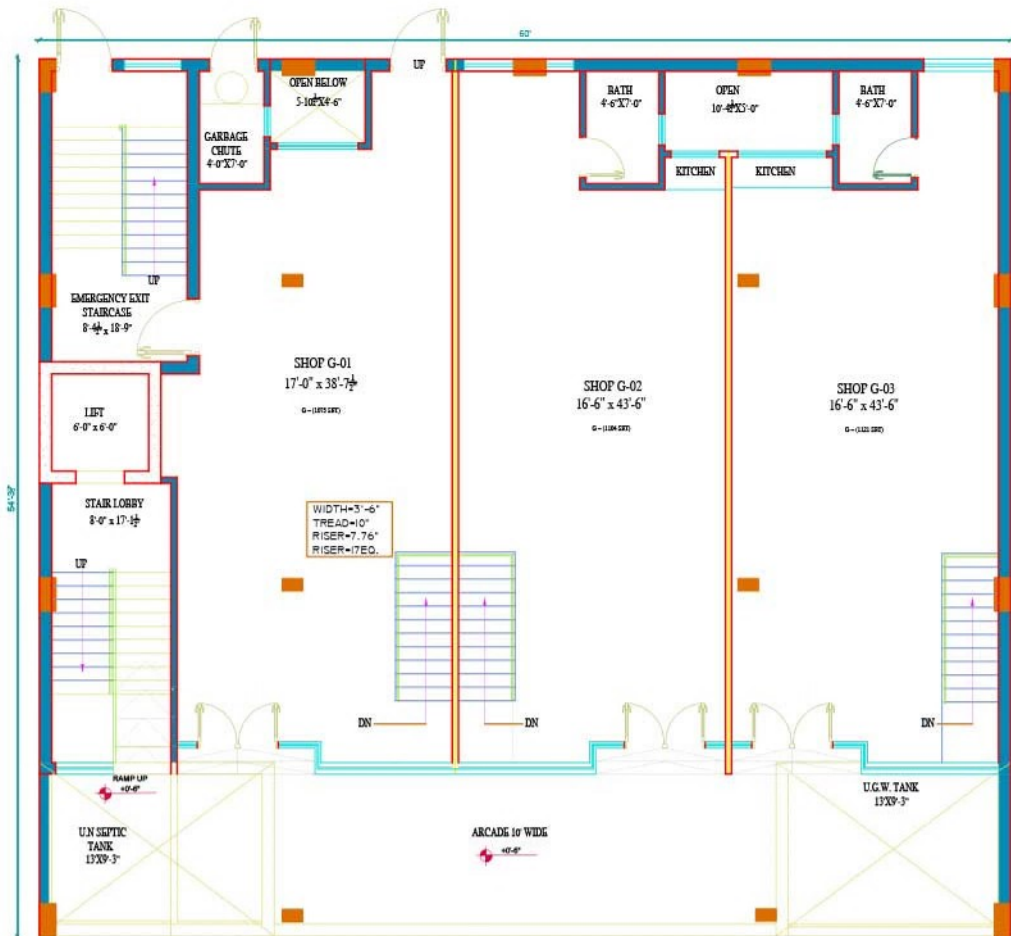
**GROUND FLOOR PLAN**



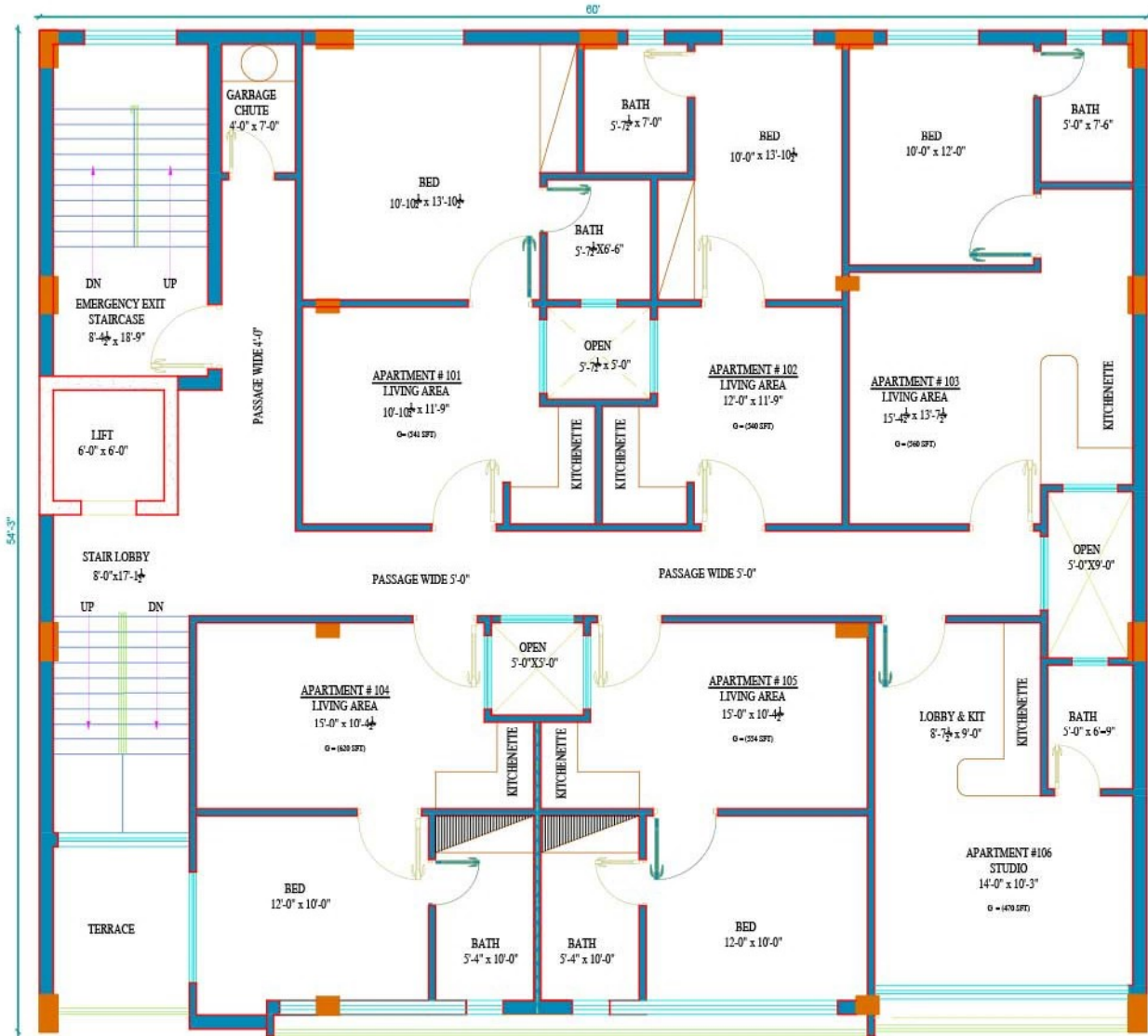
**TYPICAL FLOOR PLAN**



**BASEMENT FLOOR PLAN**

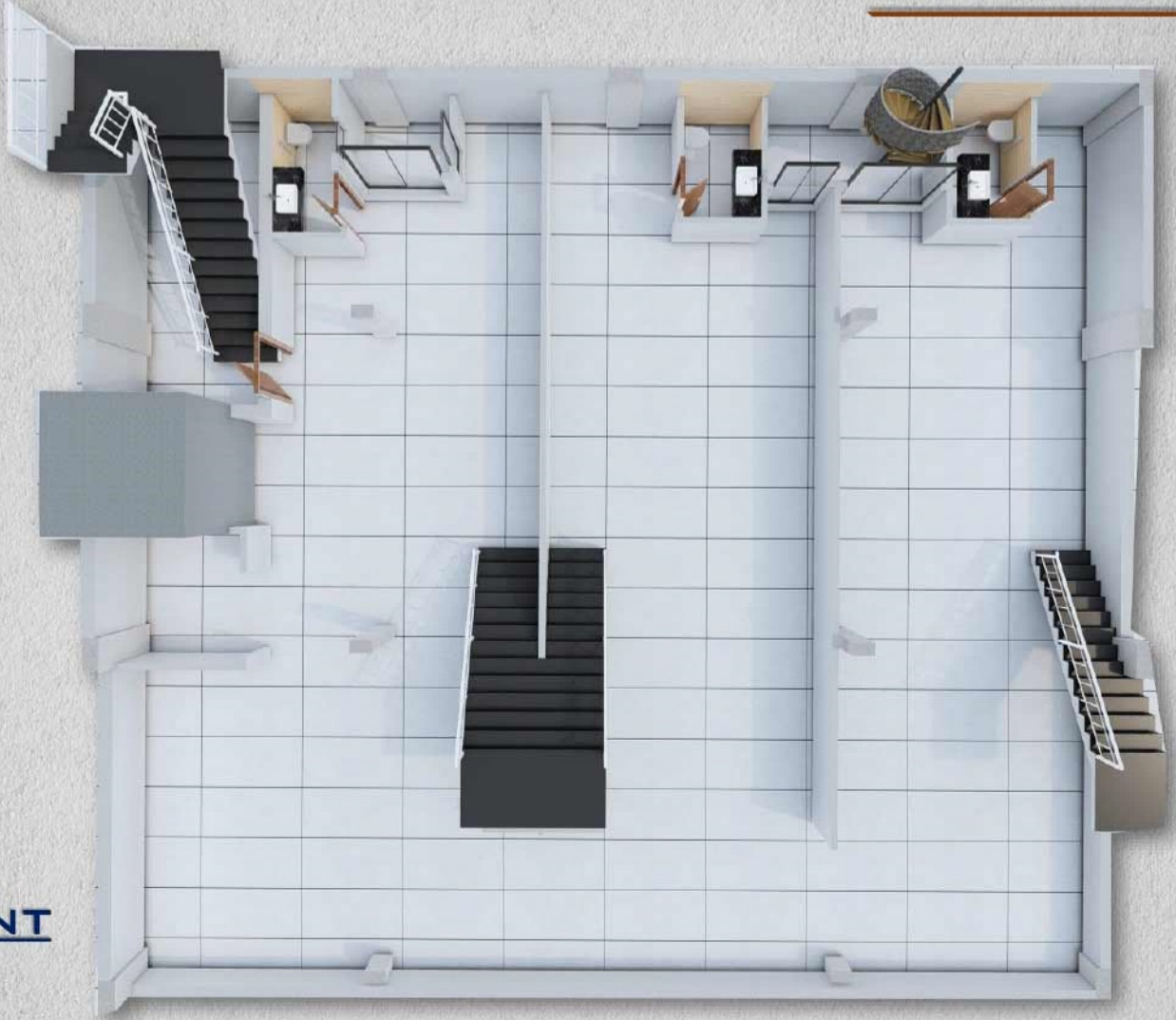


**GROUND FLOOR PLAN**



**TYPICAL FLOOR PLAN**





**BASEMENT**  
**FLOOR**



**GROUND**  
**FLOOR**





**TYPICAL  
FLOOR PLAN**



**TYPICAL  
FLOOR PLAN**